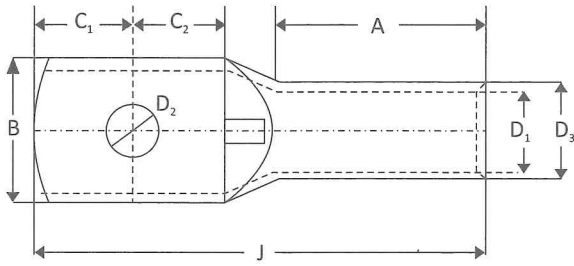


Tinned Copper Tubular Terminal



Cable Size Sq mm	Hole Size D2	Dimensions							CAT NO.
		D1	D3	B	A	C1	C2	J	
1.5	4.20	1.80	3.70	8.00	5.00	4.00	5	16	CTCT-154
1.5	5.20	1.80	3.70	8.00	5.00	4.00	5	16	CTCT-155
1.5	6.50	1.80	3.70	10.00	5.00	5.00	6	18	CTCT-156
2.5	4.20	2.40	4.00	8.00	7.00	4.00	5	18	CTCT-254
2.5	5.20	2.40	4.00	10.00	7.00	5.00	6	20	CTCT-255
2.5	6.50	2.40	4.00	10.00	7.00	5.00	6	20	CTCT-256
4	4.20	3.10	4.80	10.00	7.00	5.00	6	20	CTCT-44
4	5.20	3.10	4.80	10.00	7.00	5.00	6	20	CTCT-45
4	6.55	3.10	4.80	10.00	7.00	5.00	6	20	CTCT-46
6	5.20	3.80	5.50	10.00	9.00	5.00	6	23	CTCT-65
6	6.50	3.80	5.50	10.00	9.00	5.00	6	23	CTCT-66
6	8.20	3.80	5.50	12.00	9.00	5.00	6	27	CTCT-68
10	6.50	4.50	6.20	12.00	9.00	6.00	7	25	CTCT-106
10	8.20	4.50	6.20	12.00	9.00	6.00	9	27	CTCT-108
10	10.50	4.50	6.20	15.00	9.00	8.50	10.5	32	CTCT-1010
16	6.50	5.40	7.10	12.00	12.00	7.00	7	30	CTCT-166
16	8.20	5.40	7.10	12.00	12.00	7.00	9	32	CTCT-168
16	10.50	5.40	7.10	15.00	12.00	8.00	12	36	CTCT-1610
16	13.00	5.40	7.10	16.00	12.00	8.00	12	36	CTCT-1613
25	6.50	7.00	8.80	16.00	12.00	9.00	10	35	CTCT-256

Cable Size Sq mm	Hole Size D2	Dimensions							CAT NO.
		D1	D3	B	A	C1	C2	J	
25	8.20	7.00	8.80	16.00	12.00	9.00	10	35	CTCT-258
25	11.00	7.00	8.80	16.00	12.00	9.00	10	35	CTCT-2511
25	13.00	7.00	8.80	16.00	12.00	9.00	10	35	CTCT-2513
35	6.5	8	10	17	15	9	10	39	CTCT-356
35	8.4	8	10	17	15	9	10	39	CTCT-358
35	11	8	10	17	15	9	10	39	CTCT-3510
35	13	8	10	17	15	9	10	39	CTCT-3512
50	6.5	9.2	11.2	20	20	10	10	46	CTCT-506
50	8.4	9.2	11.2	20	20	10	10	46	CTCT-508
50	11	9.2	11.2	20	20	10	10	46	CTCT-5010
50	13	9.2	11.2	20	20	10	10	46	CTCT-5012
70	6.5	11.6	13.8	20	20	13.5	13.5	58	CTCT-706
70	8.4	11.6	13.8	20	20	13.5	13.5	58	CTCT-708
70	11	11.6	13.8	20	20	13.5	13.5	58	CTCT-7010
70	13	11.6	13.8	20	20	13.5	13.5	58	CTCT-7012
95	8.4	12.8	15.6	22	24	12.5	12.5	55	CTCT-958
95	11	12.8	15.6	22	24	12.5	12.5	55	CTCT-9510
95	13	12.8	15.6	22	24	12.5	12.5	55	CTCT-9512
95	17	12.8	15.6	22	24	12.5	12.5	55	CTCT-9516
120	8.4	14.8	17.8	25.5	26	14	14	62	CTCT-1208
120	11	14.8	17.8	25.5	26	14	14	62	CTCT-12010
120	13	14.8	17.8	25.5	26	14	14	62	CTCT-12012
120	17	14.8	17.8	25.5	26	14	14	62	CTCT-12016
150	8.4	16.5	20.5	32	30	16	16	70	CTCT-1508
150	11	16.5	20.5	32	30	16	16	70	CTCT-15010
150	13	16.5	20.5	32	30	16	16	70	CTCT-15012
150	17	16.5	20.5	32	30	16	16	70	CTCT-15016
185	8.4	18	22	34.5	33	17.5	17.5	80	CTCT-1858
185	11	18	22	34.5	33	17.5	17.5	80	CTCT-18510
185	13	18	22	34.5	33	17.5	17.5	80	CTCT-18512
185	17	18	22	34.5	33	17.5	17.5	80	CTCT-18516
240	11	22.5	26	39	41	21	21	96	CTCT-24010
240	13	22.5	26	39	41	21	21	96	CTCT-24012
240	17	22.5	26	39	41	21	21	96	CTCT-24016
240	21	22.5	26	39	41	21	21	96	CTCT-24020
300	11	24.5	28.5	43.5	44	22	22	102	CTCT-30010
300	13	24.5	28.5	43.5	44	22	22	102	CTCT-30012
300	17	24.5	28.5	43.5	44	22	22	102	CTCT-30016
300	21	24.5	28.5	43.5	44	22	22	102	CTCT-30020
400	13	28.5	33	47	47	26	26	114	CTCT-40014
400	17	28.5	33	47	47	26	26	114	CTCT-40016
400	21	28.5	33	47	47	26	26	114	CTCT-40020

Cable Size Sq mm	Hole Size D2	Dimensions							CAT NO.
		D1	D3	B	A	C1	C2	J	
500	17	30	35.5	54	54	26.5	26.5	122	CTCT-50016
500	21	20	35.5	54	54	26.5	26.5	122	CTCT-50020
630	17	35	40.75	60	63	29.5	29.5	137	CTCT-63016
630	21	35	40.75	60	63	29.5	29.5	137	CTCT-63020
630	BL	35	40.75	60	63	29.5	29.5	137	CTCT-630
800	17	39.5	46	80	80	34	34	166	CTCT-80016
800	21	39.5	46	80	80	34	34	166	CTCT-80020
800	BL	39.5	46	80	80	34	34	166	CTCT-800
1000	17	43	54	90	88	42	42	190	CTCT-100016
1000	21	43	54	90	88	42	42	190	CTCT-100020
1000	BL	43	54	90	88	42	42	190	CTCT-1000